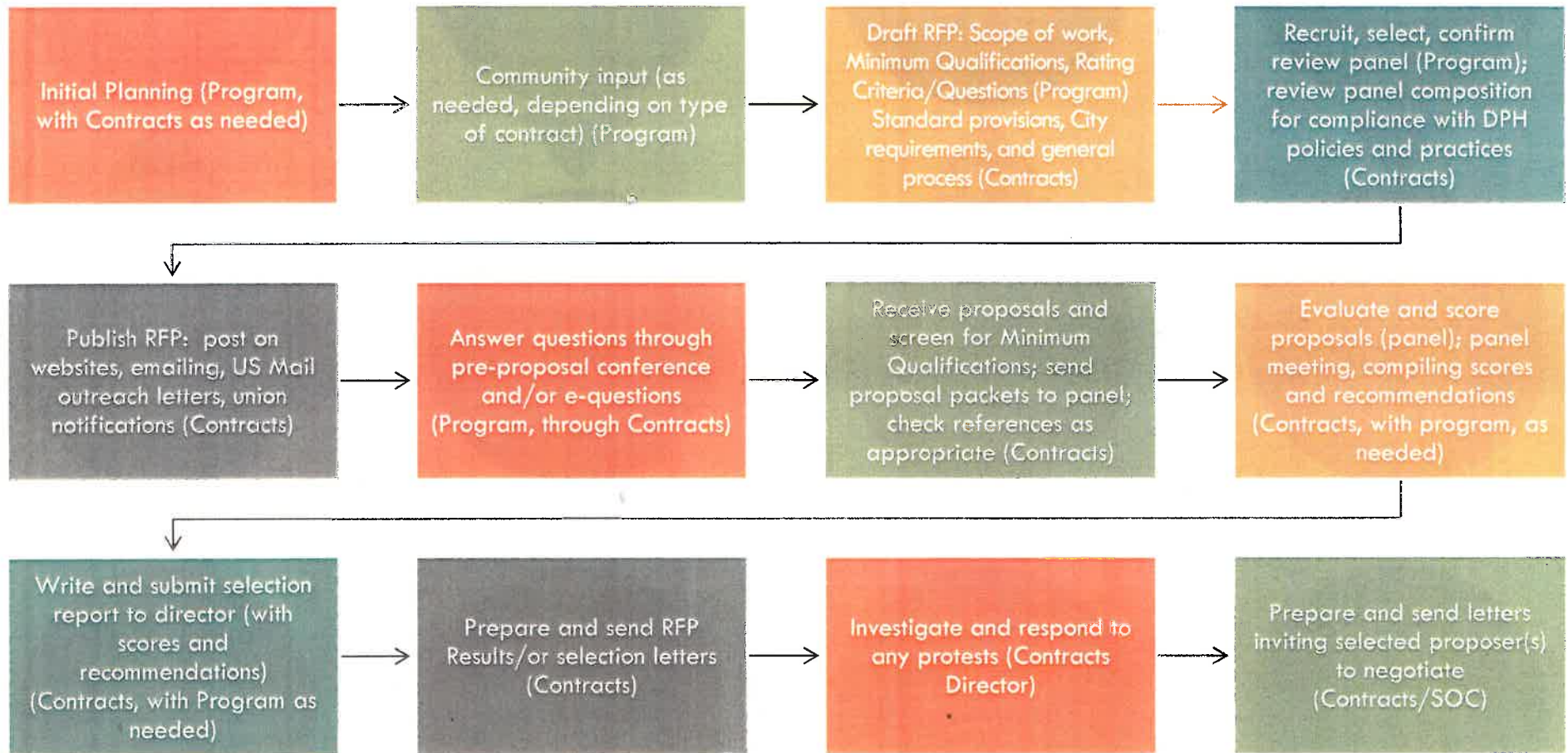


# RFP/Q PROCESS FLOW CHART



**Notes:**

This flow chart describes the general process used for RFPs/RFQs, but these processes may be tailored to meet specific RFP/RFQ or contracting types or needs; "Program" refers to any SFDPH SOC Program staff involved in preparing and administering the RFP, e.g., CBHS, HHS, HPS, HUH, SFGH, LHH, Primary Care, MCH, JHS, etc.) "Contracts" refers to the SFDPH Office of Contracts Management and Compliance (the "Contracts Office")